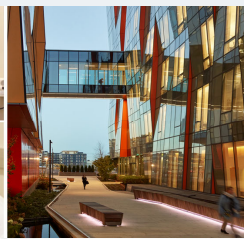


# Diabetes and Metabolism Seminar Series

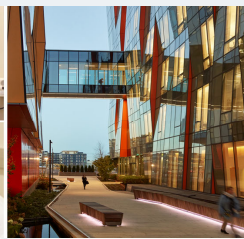


## THE DIABETES AND METABOLISM SEMINAR SERIES AND THE NW-METABOLOMICS CENTER PRESENTS: Nutrition, Metabolism and Metabolomics: New Frontiers and Intersections

Friday, October 7, 2022 9:00 am - 5:00 pm; UW South Lake Union - Orin Smith Auditorium  
In-Person Only | Full Day Symposium | [Register at: diabetesmetabseminars.com](https://diabetesmetabseminars.com)

- 8:30 am Registration & Coffee & Socializing
- 9:00 am Welcome & Introduction - **Daniel Raftery, PhD** Professor, Dept. of Anesthesiology and Pain Medicine, UW
- 9:30 am **Nagana Gowda, PhD** Research Associate Professor, Dept. of Anesthesiology and Pain Medicine, UW  
*A New Limit for Blood Metabolite Analysis Using NMR Spectroscopy.*
- 10:00 am **Matthew Walker, PhD** Acting Instructor, Dept. of Anesthesiology and Pain Medicine, UW  
*Raising NAD<sup>+</sup> level stimulates short-chain dehydrogenase/reductase proteins to alleviate heart failure.*
- 10:30 am Coffee Break & Socializing
- 11:00 am  **Keynote Talk: Nichole Reisdorph, PhD** Professor, Dept. of Pharmaceutical Sciences, University of Colorado Anschutz Medical Campus  
*Nutrimetabolomics reveals small molecule-associated changes to health outcomes following DASH- and Mediterranean-dietary interventions.*
- 12:00 pm Lunch
- 1:00 pm **Marian Neuhouser, PhD, RD** Program Head, Cancer Prevention Program, Public Health Sciences Division, Fred Hutchinson Cancer Center  
*Challenges with dietary self-report in population and clinical investigations: nutritional biomarkers to the rescue.*

# Diabetes and Metabolism Seminar Series



- 1:30 pm **Sandi Navarro, PhD** Senior Research Scientist and Biostatistician, Public Health Sciences Division, Fred Hutchinson Cancer Center  
*Health and lifestyle factors associated with metabolism.*
- 2:00 pm **Grant O’Keefe, MD** Professor, Dept. of Surgery, UW  
*Plasma and whole blood metabolomics: Understanding the response to traumatic injury and nutritional support in the ICU.*
- 2:30 pm **Fausto Carnivale Neto, PhD** Acting Instructor, Dept. of Anesthesiology and Pain Medicine, UW  
*Identifying unknown metabolites using molecular networking.*
- 3:00 pm **Coffee Break & Socializing**
- 3:20 pm **Matthew Campbell, PhD** Acting Instructor, Dept. of Radiology, UW  
*Muscle contraction induced changes to mitochondrial substrate use.*
- 3:50 pm **Ketaki Mhatre, PhD** Post Doctoral Fellow, Dept. of Bioengineering  
*dATP elevation induces myocardial metabolic remodeling to support improved cardiac function.*
- 4:20 **Ben Harrison,** Research Scientist, Dept. of Lab Medicine & Pathology, UW  
*Insights into aging from a metabolome clock in the fruit fly.*

***Jointly Sponsored by Diabetes Research Center, UW Medicine Diabetes Institute, UW Nutrition Obesity Research Center, NW Metabolomics Research Center, and UW Center for Translational Muscle Research***