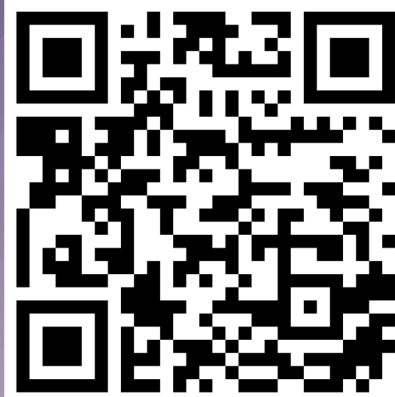


Diabetes and Metabolism Seminar Series

University of Washington



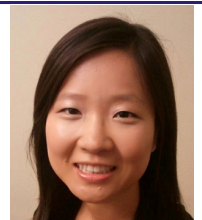
Developmental Origins of Obesity & Metabolic Disease: Translational & Public Health Perspectives

December 12th, 2024 1:00pm - 4:30pm, Brotman Auditorium

Half-day Symposium [Register at: diabetesmetabseminars.com](https://diabetesmetabseminars.com)

12:45p Coffee & Socializing

1:00p **Shan Luo, PhD** Assistant Professor
University of Southern California, Los Angeles
Dept. of Medicine, Div. of Endocrinology and Diabetes
Neurobiological mechanisms underlying obesity development during critical developmental periods in offspring exposed to maternal diabetes



1:35p **Mariana Parenti, PhD** Postdoctoral Fellow
Seattle Children's Research Institute
Center for Developmental Biology and Regenerative Medicine
Leveraging multi-omic data to understand the placenta's role as a mediator between prenatal vitamin D levels and preterm birth

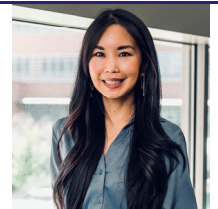


2:10p Break & Refreshments

2:25p **Sheela Sathyanarayana, MD, MPH** Professor
Seattle Children's Research Institute
Center for Child Health, Behavior and Development
Environmental Factors and Obesity within the ECHO program



3:00p **Wei Perng, PhD, MPH** Associate Professor
University of Colorado, Anschutz Medical Campus, Dept. of Epidemiology
In utero overnutrition and obesity and diabetes...Oh my! Chasing the yellow brick road to precision prevention



3:35p **Suchitra Chandrasekaran, MD, MSCE** Associate Professor
Emory University, Dept. of Obstetrics & Gynecology
Div. of Maternal Fetal Medicine
Brain and the Baby



4:10p Wrap-up